

RM410 GEARED MOTOR INSTALLATION DETAILS

Maximum performance details listed below are at 6 bar / 90 psi. The performance under different conditions can be obtained by using the curves on page 29. A typical minimum gearbox efficiency of 90% can be expected. For higher pressures contact SPX Hydraulic Technologies.

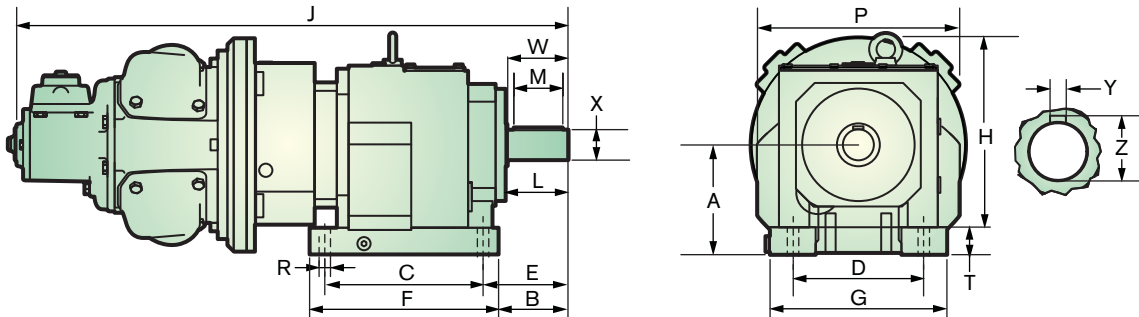
The maximum overhung force is assumed acting midway along the output shaft; for other positions or higher loads on intermittent applications; contact SPX Hydraulic Technologies.

PERFORMANCE SUMMARY

GEARBOX RATIO	MAXIMUM POWER CONDITIONS						APPROX. MIN. START TORQUE		MAX. CONT. rmp	MAX. OVERHUNG FORCE		WEIGHT			
	kW	hp	rpm	TORQUE		Nm	lbf. ft.	N		lbf.	GEARBOX	ADAPTER	GEARBOX KIT	MOTOR & GEARBOX	
				Nm	lbf. ft.										
5.06	11.25	15	316	288	213	317	234	390	3010	677	67	14	81	143	
24.94	11.25	15	64	1422	1049	1564	1154	79	13780	3098	132	14	146	208	
48.44	11.25	15	33	2761	2038	3037	2241	41	22270	5007	215	14	229	291	
69.36	11.25	15	23	3954	2918	4349	3209	28	31140	7001	312	14	326	388	
92.91	11.25	15	17	5296	3908	5825	4299	21	31140	7001	312	14	326	388	
123.59	11.25	15	13	7045	5199	7749	5719	16	86311	19404	475	14	489	551	
141.28	11.25	15	11	8053	5943	8858	6537	14	86311	19404	475	14	489	551	
177.23	11.25	15	9	10102	7455	11112	8201	11	101570	22835	635	14	649	711	
206.34	11.25	15	8	11761	8680	12938	9548	10	120000	26978	635	14	649	711	

For additional types and ratios contact SPX Hydraulic Technologies.

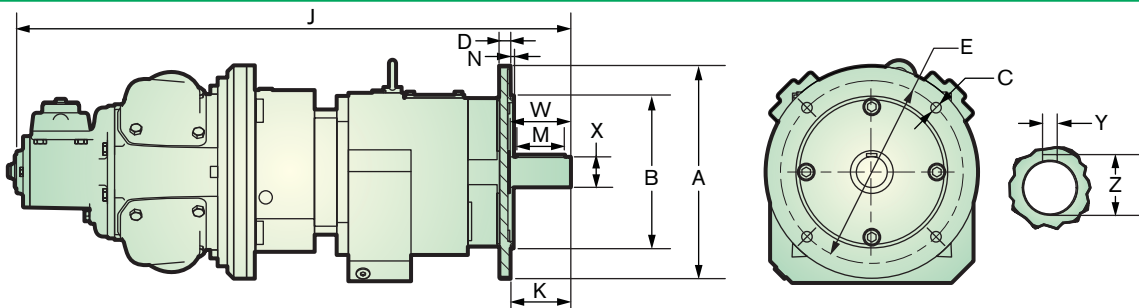
BASE MOUNTED GEAR BOX DIMENSIONS



RANGE RATIO	A	B	C	D	E	F	G	H	J	L	M	P	R	T	W	X	Y	Z	MASS
3.49 - 6.72:1	140 - 35	115.00	205	170	135	245	235	315 + 35	865	104	80	350	17.5	30	100	50.01	14	53.5	143 kg
	5.5 - 1.3	4.5"	8.1"	6.7"	5.3"	9.7"	9.25"	12.4"+1.4"	34.1"	4.1"	3.2"	13.8"	0.7"	1.2"	3.9"	1.97"	0.6"	2.1"	315 lb
7.59 - 17.27:1	180	115.00	260	215	140	310	290	364	900	104	80	350	17.5	45	100	50.01	14	53.5	161 kg
	7.1"	4.5"	10.2"	8.5"	5.5"	12.2"	11.4"	14.3"	35.4"	4.1"	3.2"	13.8"	0.7"	1.8"	3.9"	1.97"	0.6"	2.1"	355 lb
19.48 - 35.14:1	225	132.00	310	250	159.5	365	340	445	959	125	100	410	22	50	120	60.02	18	64	208 kg
	8.9"	5.2"	12.2"	9.8"	6.3"	14.4"	13.4"	17.5"	37.8	4.9"	3.9"	16.1"	0.9"	1.97"	4.7"	2.4"	0.7"	2.5"	459 lb
37.57 - 57.56:1	250	150.00	370	290	185	440	400	507	1063	146	110	462	26	55	140	70.02	20	75	291 kg
	9.8"	5.9"	14.6"	11.4"	7.3"	17.3"	15.7"	19.96"	41.9"	5.8"	4.3"	18.2"	1.02"	2.2"	5.5"	2.8"	0.8"	2.9"	642 lb
62.12 - 81.04:1	315	220.00	410	340	260	490	450	578	1163	210	180	510	33	60	210	100.02	28	106	388 kg
	12.4"	8.7"	16.1"	13.4"	10.2"	19.3"	17.7"	22.755"	45.8"	8.3"	7.1"	20.1"	1.3"	2.4"	8.3"	3.9"	1.1"	4.2"	815 lb



FLANGE MOUNTED GEAR BOX DIMENSIONS



RANGE RATIO	A	B	C	D	E	J	K	M	N	W	X	Y	Z	MASS
3.49 - 6.72:1	350	250.01	17.5	16	300	865	100	80	4	100	50.01	14	53.5	143 kg
	13.8"	9.8"	0.7"	0.6"	11.8"	34.1"	3.9"	3.2"	0.2"	3.9"	1.96"	0.6"	2.1"	315 lb
7.59 - 17.27:1	350	250.01	17.5	18	300	906	100	80	5	100	50.01	14	53.5	161 kg
	13.8"	9.8"	0.7"	0.7"	11.8"	35.7"	3.9"	3.2"	0.2"	3.9"	1.96"	0.6"	2.1"	355 lb
19.48 - 35.14:1	450	350.00	17.5	20	400	959	120	100	5	120	60.02	18	64	208 kg
	17.7"	13.8"	0.7"	0.8"	15.7"	37.8"	4.7"	3.9"	0.2"	4.7"	2.4"	0.7"	2.5"	459 lb
37.57 - 57.56:1	450	350.00	17.5	22	400	1063	140	110	5	140	70.03	20	74.5	291 kg
	17.7"	13.8"	0.7"	0.9"	15.7"	41.9"	5.5"	4.3"	0.2"	5.5"	2.8"	0.8"	2.9"	642 lb
62.12 - 81.04:1	550	450	17.5	25	500	1125	170	140	5	210	90.02	25	106	388 kg
	21.7"	17.7"	0.7"	1.0"	19.7"	44.3"	6.7"	5.5"	0.2"	8.3"	3.54"	1.0"	4.2"	815 lb

Detailed drawings and CAD models available on request. Ratios above the basic range shown are available on request. Alternative gearbox types and arrangements i.e. right angle output, hollow shaft etc. also available.

Modified dimensions for shafts and flanges available on request.