

# RM510 GEARED MOTOR INSTALLATION DETAILS

Maximum performance details listed below are at 6 bar / 90 psi. The performance under different conditions can be obtained by using the curves on page 36. A typical minimum gearbox efficiency of 90% can be expected. For higher pressures contact SPX Hydraulic Technologies.

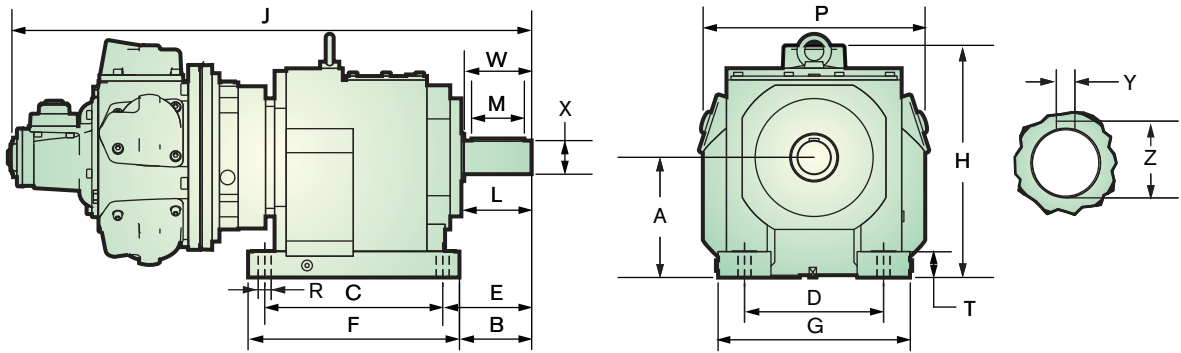
The maximum overhung force is assumed acting midway along the output shaft; for other positions or higher loads on intermittent applications; contact SPX Hydraulic Technologies.

## PERFORMANCE SUMMARY

GEARBOX RATIO	MAXIMUM POWER CONDITIONS					APPROX. MIN. START TORQUE		MAX. CONT. rmp	MAX. OVERHUNG FORCE		WEIGHT			
	kW	hp	rpm	TORQUE Nm	TORQUE lbf. ft.	Nm	lbf. ft.		N	lbf.	GEARBOX	ADAPTER	GEARBOX KIT	MOTOR & GEARBOX
5.24	16	22.5	210	734	541	807	596	281	13870	3118	85	18	103	218
25.05	16	22.5	44	3507	2588	3858	2847	59	45000	10117	215	18	233	348
50.74	16	22.5	22	7104	5243	7814	5767	29	50000	11241	305	18	323	438
92.06	16	22.5	12	12888	9512	14177	10463	16	120000	26978	635	18	653	768

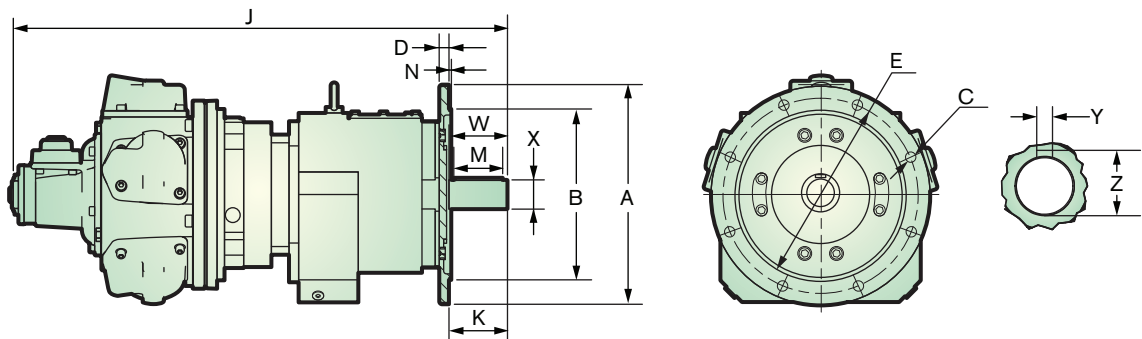
For additional types and ratios contact SPX Hydraulic Technologies.

## BASE MOUNTED GEAR BOX DIMENSIONS



RANGE RATIO	A	B	C	D	E	F	G	H	J	L	M	P	R	T	W	X	Y	Z	MASS
3.42 - 12.68:1	225	132	310	250	159.5	365	340	469	1131	125	100	410	22	50	120	60.02	18	64	218 kg
	8.9"	5.2"	12.2"	9.8"	6.3"	14.4"	13.4"	18.5"	44.5"	4.9"	3.9"	16.1"	0.9"	2.0"	4.7"	2.4"	0.7"	2.5"	481 lb
14.06 - 21.41:1	250	150	370	290	185	440	400	507	1092	145	110	462	26	55	140	70.02	20	74.5	348 kg
	9.8"	5.9"	14.6"	11.4"	7.3"	17.3"	15.7"	20.0"	43.0"	5.7"	4.3"	18.2"	1.02"	2.2"	5.5"	2.8"	0.8"	2.9"	767 lb
23.04 - 35.09:1	315	220	410	340	260	490	450	578	1199	216	180	510	33	60	210	100.03	28	106	438 kg
	12.4"	8.7"	16.1"	13.4	10.2"	19.3"	17.7"	22.8"	47.2"	8.5"	7.1"	20.1"	1.3"	2.4"	8.3	3.9"	1.1"	4.2"	966 lb
39.45 - 63.08:1	355	215	500	380	260	590	530	660	1305	216	180	580	39	65	210	100.03	28	106	608 kg
	14.0"	8.5"	19.7"	15.0"	10.2"	23.2"	20.9"	26.0"	51.4"	8.5"	7.1"	22.8"	1.5"	2.6"	8.3"	3.9"	1.1"	4.2"	1340 lb
69.41 - 92.06:1	425	225	580	500	270	670	630	758	1373	216	180	630	39	100	210	120.03	32	127	768 kg
	16.7"	8.9"	22.8"	19.7"	10.6"	26.4"	24.8"	29.8"	54.1"	8.5"	7.1"	24.8"	1.5"	3.9"	8.3"	4.7"	1.3"	5.0"	1693 lb

## FLANGE MOUNTED GEAR BOX DIMENSIONS



RANGE RATIO	A	B	C	D	E	J	K	M	N	W	X	Y	Z	MASS
3.42 - 12.68:1	450	350.00	17.5	20	400	1020	120	100	5	120	60.02	18	64	218 kg
	17.7"	13.8"	0.7"	0.8"	15.7"	40.2"	4.7"	3.9"	0.2"	4.7"	2.4"	0.7"	2.5"	481 lb
14.06 - 21.41:1	450	350.00	17.5	22	400	1103	140	110	5	140	70.02	20	74.5	348 kg
	17.7"	13.8"	0.7"	0.9"	15.7"	43.4"	5.5"	4.3"	0.2"	5.5"	2.8"	0.8"	2.9"	767 lb
23.04 - 35.09:1	450	350.00	17.5	22	400	1170	170	140	5	210	90.03	25	95	438 kg
	17.7"	13.8"	0.7"	0.9"	15.7"	46.1"	6.7"	5.5"	0.2"	8.3	3.5"	1.0"	3.7"	966 lb
39.45 - 63.08:1	550	450.00	18	31	500	1305	210	180	5	210	100.03	28	106	608 kg
	21.7"	17.7"	0.7"	1.2"	19.7"	51.4"	8.3"	7.1"	0.2"	8.3"	3.9"	1.1"	4.2"	1340 lb
69.41 - 92.06:1	550	450.00	18	31	500	1392	210	180	5	210	120.03	32	127	768 kg
	21.7"	17.7"	0.7"	1.2"	19.7"	54.8"	8.3"	7.1"	0.2"	8.3"	4.7"	1.3"	5.0"	1693 lb

Detailed drawings and CAD models available on request. Ratios above the basic range shown are available on request. Alternative gearbox types and arrangements i.e. right angle output, hollow shaft etc. also available.

Modified dimensions for shafts and flanges available on request.

